

Shiloh Daybed Parts List

PART #290916 WOOD POST BED FRAME MOUNTING HARDWARE

- 1 (8) 6mm X 80mm ALLEN HEAD SCREW
- 2 (1) ALLEN WRENCH 5/32
- 3 (16) METAL WASHERS 3/4"(OD)
- 4 (8) HEX NUT 6mm

PART #291001 SHILOH DAYBED GRILL MOUNTING HDWR

- 6 (18) 6mm X 90mm ALLEN HEAD SCREW
- 7 (1) ALLEN WRENCH 5/32

Instruction Sheet

ASSEMBLE SIDE PANELS TO POSTS:

Align side panel rail ends (8) to holes in posts (9). (Long post is for back and short post is for front). Insert screws (6) thru holes on opposite side of post into side rail ends. Repeat with other side panel. (See Figure 1)

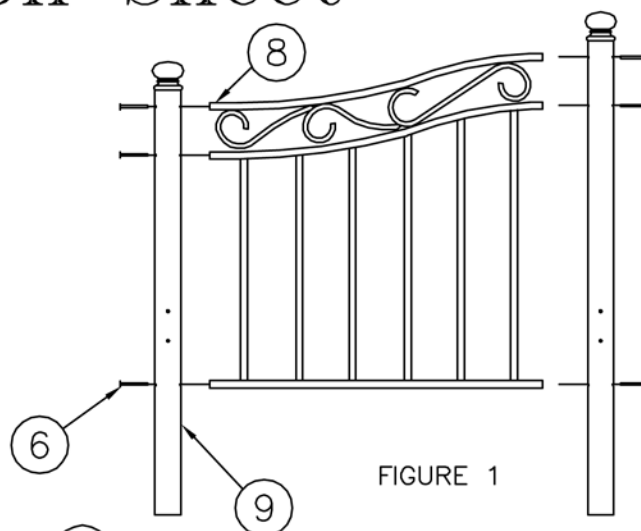


FIGURE 1

ASSEMBLE BACK PANEL TO SIDE PANEL POSTS:

Align back panel rail ends (10) to holes in side panel back post (9). Insert screws (6) thru holes on opposite side of post into back panel rails. Repeat on other end of back panel. (See Figure 2)

TIGHTEN ALL SCREWS SECURELY.

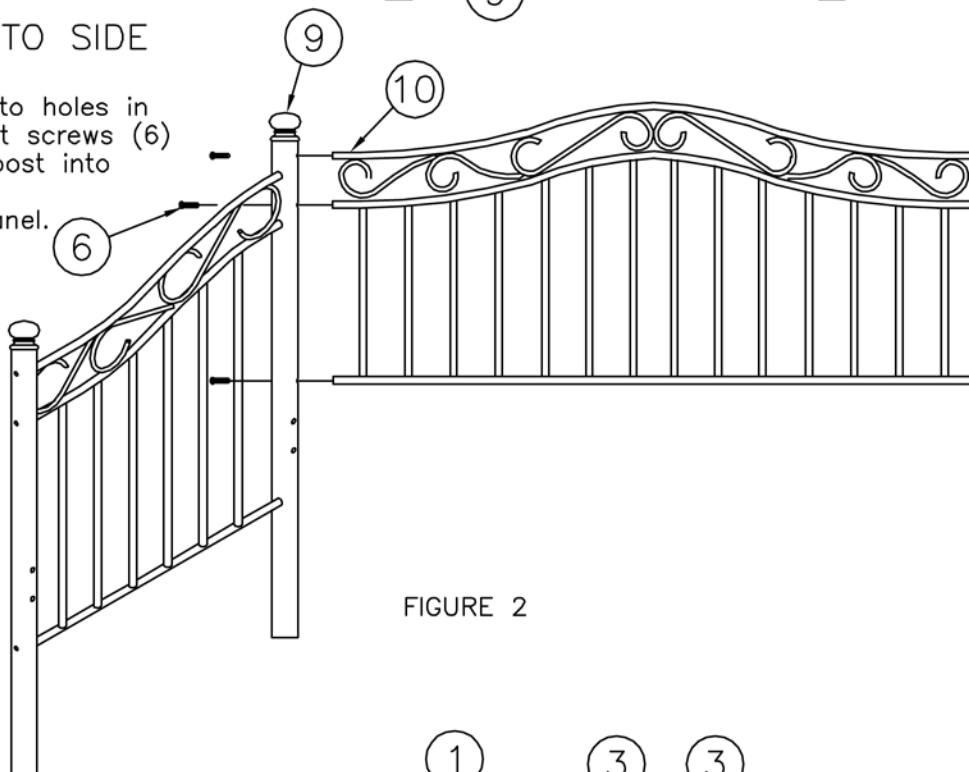


FIGURE 2

FOLLOW MANUFACTURERS INSTRUCTIONS TO ASSEMBLE END BRACKETS TO LINK SPRING BEFORE ATTACHING LINK SPRING TO DAYBED.

ASSEMBLE LINK SPRING TO DAYBED

INSERT SCREWS (1) INTO POST (9). SLIDE WASHER (3) OVER SCREW ENDS. ALIGN HOLES IN LINK SPRING END BRACKET (11) TO SCREWS IN POST. SLIDE METAL WASHERS (3) OVER SCREWS. SCREW NUT (4) ONTO SCREW. REPEAT ON OTHER 3 CORNERS OF LINK SPRING. (SEE FIGURE 3)

TIGHTEN ALL SCREWS SECURELY

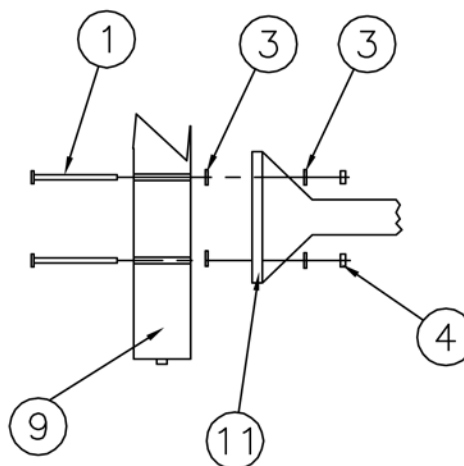


FIGURE 3